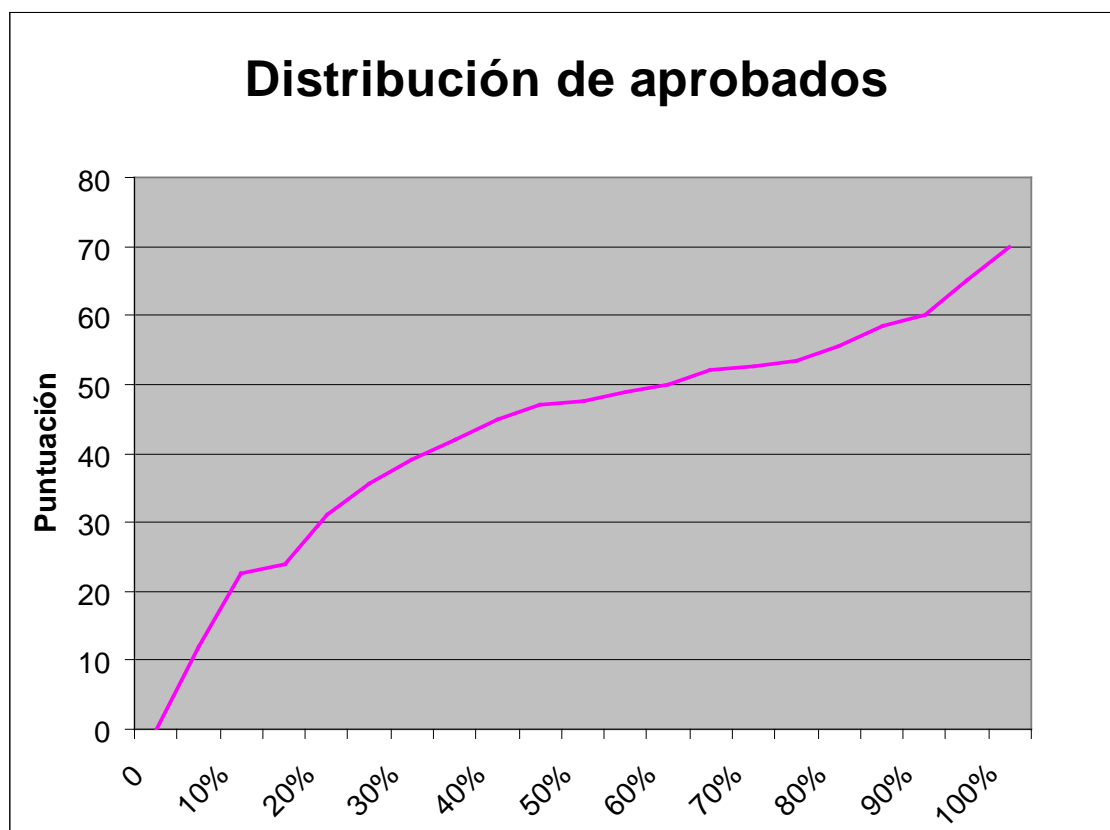


<b>Presentados</b>	<b>57</b>
<b>Se aprueba con</b>	<b>52,50</b>
<b>Media Puntos</b>	<b>44,91</b>
<b>Nº de aprobados</b>	<b>19</b>
<b>Nota Máxima</b>	<b>70</b>
<b>% Aprobados *</b>	<b>32%</b>
*Nota: el % de aprobados se ha elegido igual que en la convocatoria de 2008	



Acertadas	Falladas	Contestadas	Puntuación	Acertadas/Contestadas	Falladas/Contestadas	No Contestadas
55	15	70	47,50	78,57%	21,43%	30,00%
58	14	72	51,00	80,56%	19,44%	28,00%
54	14	68	47,00	79,41%	20,59%	32,00%
55	14	69	48,00	79,71%	20,29%	31,00%
69	6	75	66,00	92,00%	8,00%	25,00%
62	22	84	51,00	73,81%	26,19%	16,00%
64	17	81	55,50	79,01%	20,99%	19,00%
71	12	83	65,00	85,54%	14,46%	17,00%
53	6	59	50,00	89,83%	10,17%	41,00%
52	12	64	46,00	81,25%	18,75%	36,00%
35	20	55	25,00	63,64%	36,36%	45,00%
69	29	98	54,50	70,41%	29,59%	2,00%
61	17	78	52,50	78,21%	21,79%	22,00%
43	21	64	32,50	67,19%	32,81%	36,00%
67	17	84	58,50	79,76%	20,24%	16,00%
45	27	72	31,50	62,50%	37,50%	28,00%
62	26	88	49,00	70,45%	29,55%	12,00%
60	22	82	49,00	73,17%	26,83%	18,00%
40	35	75	22,50	53,33%	46,67%	25,00%
36	20	56	26,00	64,29%	35,71%	44,00%
58	11	69	52,50	84,06%	15,94%	31,00%
73	6	79	70,00	92,41%	7,59%	21,00%
56	17	73	47,50	76,71%	23,29%	27,00%
50	10	60	45,00	83,33%	16,67%	40,00%
47	23	70	35,50	67,14%	32,86%	30,00%
53	28	81	39,00	65,43%	34,57%	19,00%
72	10	82	67,00	87,80%	12,20%	18,00%
24	29	53	9,50	45,28%	54,72%	47,00%
48	6	54	45,00	88,89%	11,11%	46,00%
61	22	83	50,00	73,49%	26,51%	17,00%
53	17	70	44,50	75,71%	24,29%	30,00%
65	23	88	53,50	73,86%	26,14%	12,00%
41	36	77	23,00	53,25%	46,75%	23,00%
62	6	68	59,00	91,18%	8,82%	32,00%
63	9	72	58,50	87,50%	12,50%	28,00%
51	18	69	42,00	73,91%	26,09%	31,00%
61	12	73	55,00	83,56%	16,44%	27,00%
62	19	81	52,50	76,54%	23,46%	19,00%
48	13	61	41,50	78,69%	21,31%	39,00%
46	30	76	31,00	60,53%	39,47%	24,00%
70	18	88	61,00	79,55%	20,45%	12,00%
33	18	51	24,00	64,71%	35,29%	49,00%
19	0	19	19,00	100,00%	0,00%	81,00%
63	6	69	60,00	91,30%	8,70%	31,00%
59	13	72	52,50	81,94%	18,06%	28,00%
17	5	22	14,50	77,27%	22,73%	78,00%
30	36	66	12,00	45,45%	54,55%	34,00%
56	12	68	50,00	82,35%	17,65%	32,00%
51	24	75	39,00	68,00%	32,00%	25,00%
61	7	68	57,50	89,71%	10,29%	32,00%
63	15	78	55,50	80,77%	19,23%	22,00%
66	11	77	60,50	85,71%	14,29%	23,00%
60	16	76	52,00	78,95%	21,05%	24,00%
47	23	70	35,50	67,14%	32,86%	30,00%
54	14	68	47,00	79,41%	20,59%	32,00%
34	20	54	24,00	62,96%	37,04%	46,00%
59	25	84	46,50	70,24%	29,76%	16,00%